

Eric Land Cae Hob Llanddeiniolen, Gwynedd



is benefiting from the **Welsh Beef Quality Improvement Project**



Factfile

- 95 acres part disadvantaged and part severely disadvantaged land
- Rents an additional 70 acres lowland summer grazing
- Farms beef only
- 17 pedigree Limousin cows and 45 Limousin x Belgian Blue cows
- 2 Limousin bulls and 1 Belgian Blue bull

Eric Land joined the Welsh Beef Quality Improvement Project (WBQIP) to improve his knowledge of Estimated Breeding Values (EBVs) and to enable him to access the grant towards the purchase of a top 10% bull for his herd.

Before the training course, Eric was aware of EBVs, and had previously bought a top 1% bull, but he didn't feel that he had enough understanding of them. The course covered the interpretation of EBVs in detail, and Eric found this information invaluable. Eric said: "As I breed both Replacements and Store Cattle I now know to look for good Muscle Depth EBV and 400 Day Growth EBV which are important to give good conformation to the animals I sell as Stores. A good Milk EBV is also important as the pedigree Limousins produce replacement females for my herd. A good Calving Ease EBV is also important to reduce calving difficulties".

Eric bought Ellesmere Atom, a Limousin bull for £4,830, from Carlisle sale in October. "This was the first time ever that I had looked at the catalogues before the sale and pre-selected a list of bulls," says Eric. He chose Ellesmere Atom, that qualified on 400 Day Growth (top 1%) and Calving Ease LM0C (top 75%), as he also had good conformation. He will be used on the pedigree Limousins and some of the Limousin x Belgian Blue cows in July this year.

Eric has also taken up funding towards recording weights of calves and finds the monitoring of calves sired by different bulls very interesting. He comments: "I'm finding that the animals sired by my last top 1% bull tend to be heavier than those sired by the other bull bought with no figures. I won't ever buy a bull again without good EBVs".

Using a bull with superior genetics can mean the calves are worth an extra £40 - £60 a head. For Eric this could be worth an extra £1800 a year on his herd of 45 Limousin x Belgian Blue cows. Over four seasons this could mean an extra £7,200.

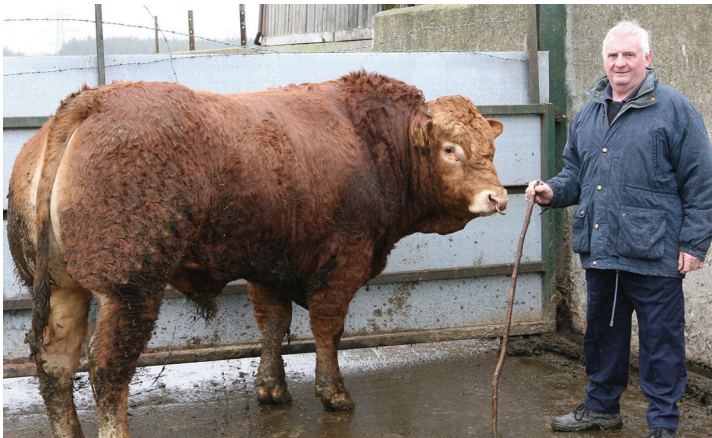
WHAT STEPS TO TAKE

1. Register with HCC on 01970 625050
2. Complete Part 1 of the training course
3. Select & purchase an eligible bull **before 31st December 2007**
4. **Immediately** register the bull with HCC
5. Complete the training course
6. Receive 40% of the purchase price back, 9 months after buying your bull (£2500 maximum)

Eric Land Cae Hob Llanddeiniolen, Gwynedd



yn elwa o'r Prosiect Gwella Ansawdd Cig Eidion



Ymunodd Eric Land â Phrosiect Gwella Ansawdd Cig Eidion Cymru (WBQIP) er mwyn dysgu mwy am Werthoedd Bridio Tybiedig (EBVau) a chael cyfle i gael cymorth ariannol i brynu tarw o blith y 10% uchaf i'w fuches.

Cyn y cwrs hyfforddi, roedd Eric yn ymwybodol o EBVau, ac roedd wedi prynu tarw yn y 1% uchaf o'r blaen, ond doedd e ddim credu ei fod yn deall digon amdanynt. Roedd y cwrs yn manylu ar ddehongliad EBVau - ac roedd gwybodaeth o'r fath yn amhrisiadwy i Eric: "Am fy mod yn bridio Anifeiliaid Cyfnewid a Gwartheg Stôr, rwy nawr yn gwybod fod rhaid chwilio am EBVau da o ran Trwch Cyhyrau a Thwf 400 Niwrnod - sy'n bwysig er mwyn rhoi cydffurfiad da i'r Anifeiliaid Stôr rwy'n eu gwerthu. Mae EBV llaeth da yn bwysig oherwydd mae'r Limousins pedigri'n cynhyrchu anifeiliaid benyw cyfnewid i'r fuches. Mae EBV Rhwyddineb Lloia hefyd yn bwysig er mwyn cael llai o anawsterau lloia."

Prynodd Eric 'Ellesmere Atom', tarw Limousin am £4,830, yn arwerthiant Caerliwelydd fis Hydref diwethaf. "Dyna oedd y tro cyntaf i mi edrych ar y catalogau cyn yr arwerthiant a dewis rhestr o deirw ymlaen llaw," meddai Eric. Dewisodd Ellesmere Atom, a oedd yn gymwys ar sail Twf 400 Niwrnod (1% uchaf) a Rhwyddineb Lloia LMOC (75% uchaf), yn ogystal â hyn roedd ganddo gydffurfiad da. Bydd yn cael ei ddefnyddio ar y Limousins pedigri a rhai o'r

Ffeil Ffeithiau

- 95 o dir - peth dan anfantais a pheth dan anfantais ddirifol
- Yn rhentu 70 erw arall o dir isel ar gyfer pori yn yr haf
- Yn ffermio gwartheg cig eidion yn unig
- 17 o wartheg Limousin pedigri a 45 o wartheg Limousin x Glas Belg
- 2 darw Limousin ac un tarw Belgian Blue

gwartheg Limousin x Belgian Blue ym mis Gorffennaf eleni.

Mae Eric hefyd wedi derbyn cymorth ariannol tuag at gofnodi pwysau lloi ac mae'n ddiddorol iddo gofnodi'r lloi o wahanol deirw: "Rwy'n gweld bod epil fy nharw 1% uchaf diweddaraf yn tueddu i fod yn drymach nag epil y tarw arall a brynwyd heb unrhyw ffigurau. 'Fydda' i byth eto yn prynu tarw heb EBVau da."

Gall defnyddio tarw â geneteg uwchraddol olygu bod y lloi yn werth £40 - £60 y pen yn ychwanegol. I Eric fe allai fod yn werth £1,800 yn ychwanegol y flwyddyn gyda'i fuches o 45 o fuchod Limousin x Belgian Blue. Dros bedwar tymor gallai olygu £7,200 yn ychwanegol.

CAMAU I'W CYMRYD

1. Cofrestrwch gyda HCC ar 01970 625050
2. Cwblhewch Rhan 1 o'r cwrs hyfforddi
3. Dewiswch a phrynwch darw cymwys **cyn 31 Rhagfyr 2007**
4. Cofrestrwch y tarw gyda HCC yn syth bin
5. Cwblhewch y cwrs hyfforddi
6. Derbyniwch 40% o'r pris prynu yn ôl, 9 mis ar ôl prynu'ch tarw (uchafswm o £2500)